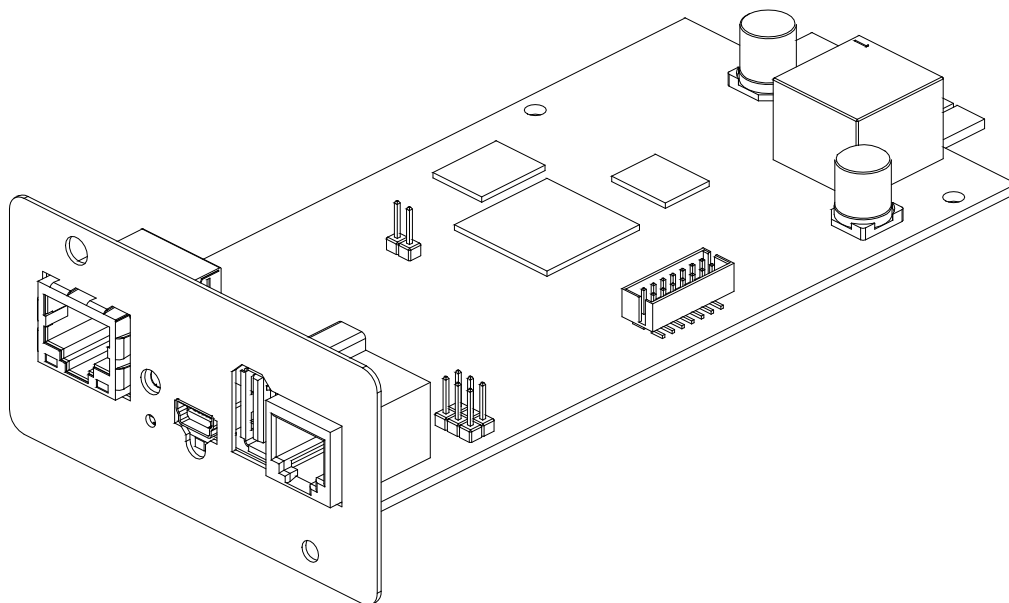


NetMan *plus*



Network Adapter

MANUALE D'USO

USER'S MANUAL

INTRODUCTION

Thank you for choosing our product.

The accessories described in this manual are of the highest quality, carefully designed and built in order to ensure excellent performance.

This manual contains detailed instructions on how to install and use the product.

It should be kept with care near the *NetMan Plus*, so that it can be consulted for information on how to use and make the most of your device. IT SHOULD BE READ BEFORE YOU START WORKING ON THE DEVICE.

Symbols used in this manual:



Warning

Indicates important information that must not be ignored.



Information

Provides notes and useful suggestions for the User.

SAFETY

This part of the manual contains SAFETY precautions that must be followed scrupulously.

- ❖ The device has been designed for professional use and is therefore not suitable for use in the home.
- ❖ The device has been designed to operate only in closed environments. It should be installed in rooms where there are no inflammable liquids, gas or other harmful substances.
- ❖ Take care that no water or liquids and/or foreign bodies fall into the device.
- ❖ In the event of a fault and/or impaired operation of the device, do not attempt to repair it but contact the authorized service centre.
- ❖ The device must be used exclusively for the purpose for which it was designed. Any other use is to be considered improper and as such dangerous. The manufacturer declines all responsibility for damage caused by improper, wrong and unreasonable use.

ENVIRONMENTAL PROTECTION

In the development of its products, the company devotes abundant resources to analysing the environmental aspects.

All our products pursue the objectives defined in the environmental management system developed by the company in compliance with applicable standards.

No hazardous materials such as CFCs, HCFCs or asbestos are used in this product.

When evaluating packaging, the choice of material has been made favouring recyclable materials. Please separate the different material of which the packaging is made and dispose of all material in compliance with applicable standards in the country in which the product is used.

DISPOSING OF THE PRODUCT

The device contains electronic PCBs and batteries which are considered TOXIC. When the product reaches the end of its operating life, dispose of it in accordance with applicable local legislation.

Disposing of the product correctly contributes to respecting the environment and personal health.

CONTENTS

PRESENTATION	6
<i>DESCRIPTION</i>	6
<i>OPENING THE PACKAGING AND CHECKING THE CONTENTS</i>	7
<i>NETWORK PORT</i>	8
<i>MICRO-USB COMMUNICATION PORT</i>	8
<i>NETWORK SERVICES</i>	8
SSH	8
Serial network	8
Wake-on-LAN	8
HTTP	9
SNMP	10
UDP	10
FTP	11
Email	12
Reports	13
<i>UPS VALUES AND EVENTS HISTORY LOG ARCHIVE</i>	14
Eventlog	14
Datalog	15
<i>ENVIRONMENTAL SENSORS (OPTIONAL)</i>	16
Available sensors	16
INSTALLATION AND CONFIGURATION	17
<i>INSTALLATION OF NETMAN 202 PLUS</i>	17
<i>CONFIGURATION</i>	17
Configuration via USB	17
Configuration via ssh	17
Saving the configuration and applying the changes	18
Start menu	18
Main configuration menu	19
IP config menu	22
Time setting menu	23
UPS config menu	25

Services 1 menu _____	26
SNMPv1 config menu _____	27
SNMPv1 community menu _____	27
Email config menu _____	28
Email logic menu _____	29
Miscellaneous menu _____	30
Activation 1 menu _____	31
Services 2 menu _____	31
Wake-On-LAN address menu _____	32
Wake-On-LAN delay menu _____	32
Activation 2 menu _____	33
Sensors Config menu _____	33
I/O Sensors menu _____	35
Threshold sens menu _____	36
Security menu _____	37
Save and load menu _____	39
Configuration of several devices _____	43
<i>FIRMWARE UPDATE</i> _____	43
TECHNICAL DATA _____	44
<i>SPECIFICATIONS FOR THE CABLING OF THE NETWORK CABLE</i> _____	44
<i>TECHNICAL SPECIFICATIONS</i> _____	44

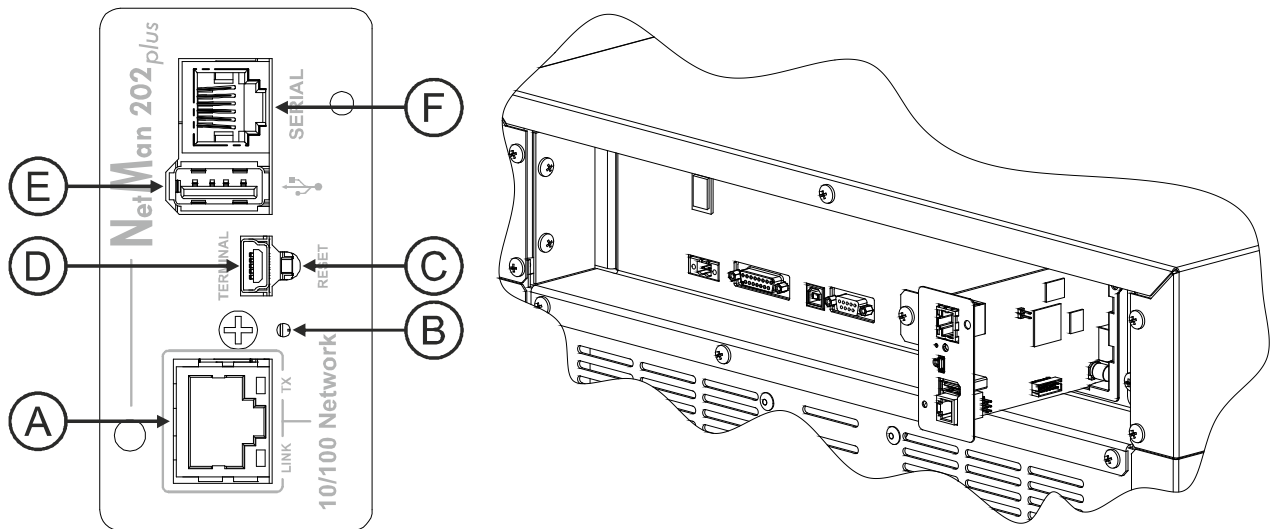
PRESENTATION

DESCRIPTION

NetMan 202 plus is a device that allows UPS management through a LAN (Local Area Network); the accessory supports all the main network protocols (SNMP v1 and v3, TCP/IP, HTTP and so on) and is compatible with Ethernet 10/100Mbps IPv4/6 networks. The UPS can therefore be integrated easily into medium and large-sized networks.

The device also records UPS values and events in the history log archive.

NetMan 202 plus

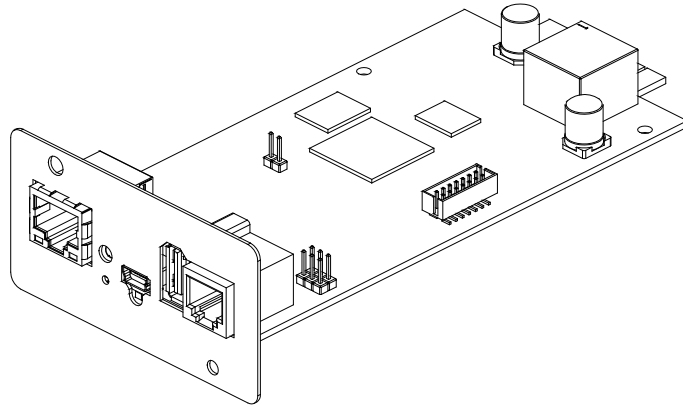


- A: network port;
- B: LED
- C: Reset button
- D: USB terminal
- E: USB (reserved)
- F: Serial (reserved)

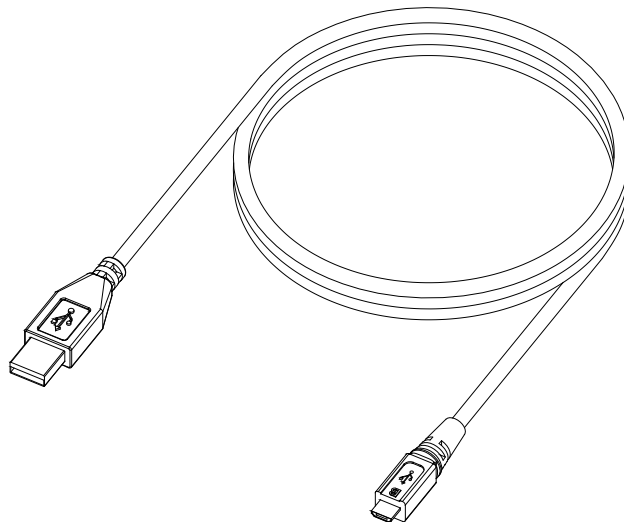
OPENING THE PACKAGING AND CHECKING THE CONTENTS

After opening the packaging, first check the contents.
The packaging should contain:

NetMan 202 plus



USB cable



NETWORK PORT

NetMan plus connects to 10/100 Mbps Ethernet networks by means of connector RJ45 (see paragraph "Specifications for the cabling of the network cable"). The LEDs built into the connector describe the status of the network:

- Left LED:
 1. on and yellow if the 10/100Mbps mode link is present
 2. on and green if the 10Mbps mode link is present

- Right LED:
 1. on and yellow during transmission in full-duplex mode
 2. on and green during transmission in half-duplex mode

MICRO-USB COMMUNICATION PORT

NetMan plus makes available an usb communication port through which it is possible to configure *NetMan plus* (see paragraph "Configuration via RS-232 serial line")

NETWORK SERVICES

NetMan plus implements a series of services based on the main network protocols. These services can be activated or deactivated according to requirements (see paragraph "Configuration"). A brief description for each of these is given below.

SSH

By means of a ssh client (available on all the main operating systems) a remote connection with *NetMan plus* can be established to change its configuration (see paragraph "Configuration via ssh").

Serial network

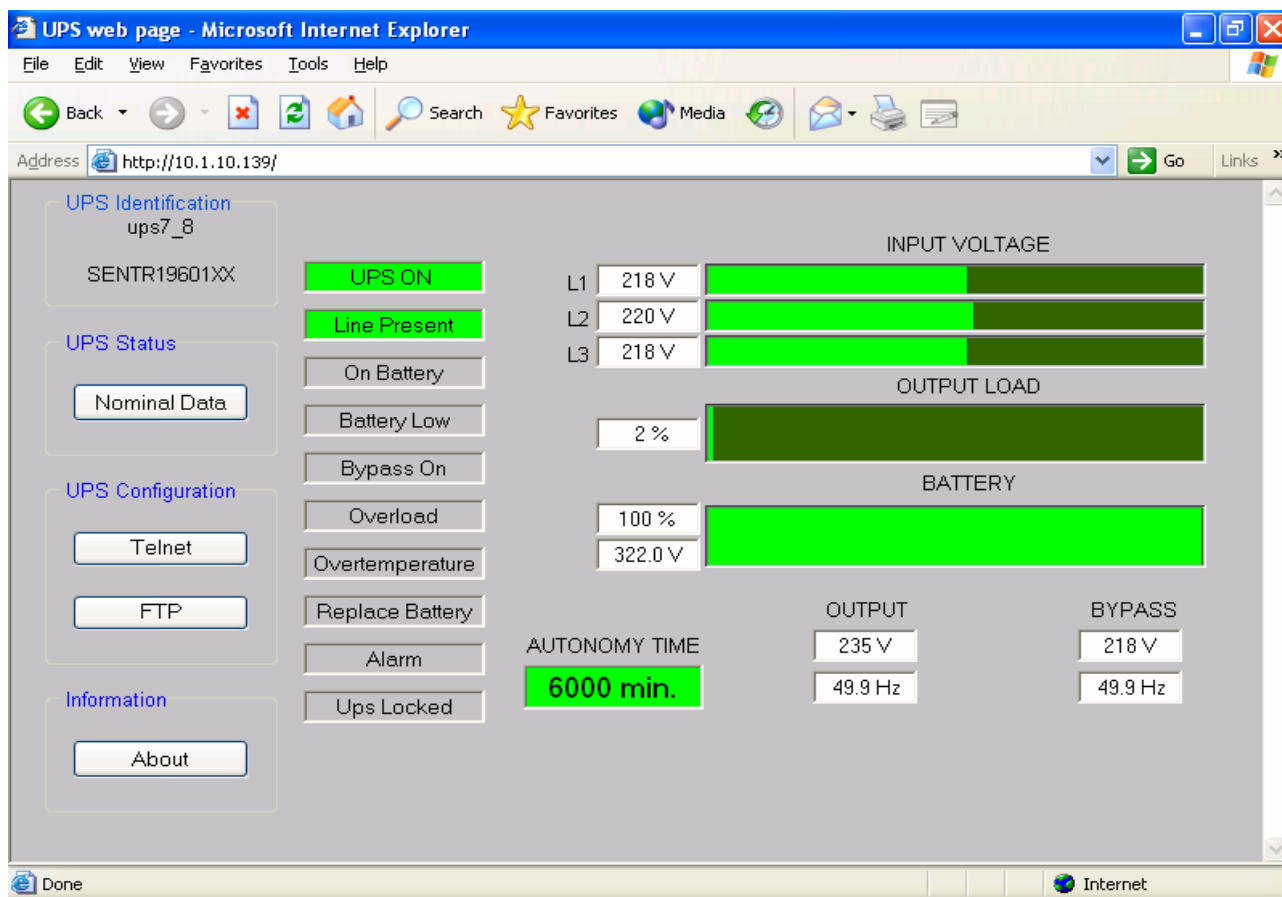
It's possible to enable a network connection together with Serial network compatible software (for example UPSTools) for UPS event log download.

Wake-on-LAN

NetMan plus can send "Wake-on-LAN" command for remote computers boot.

HTTP

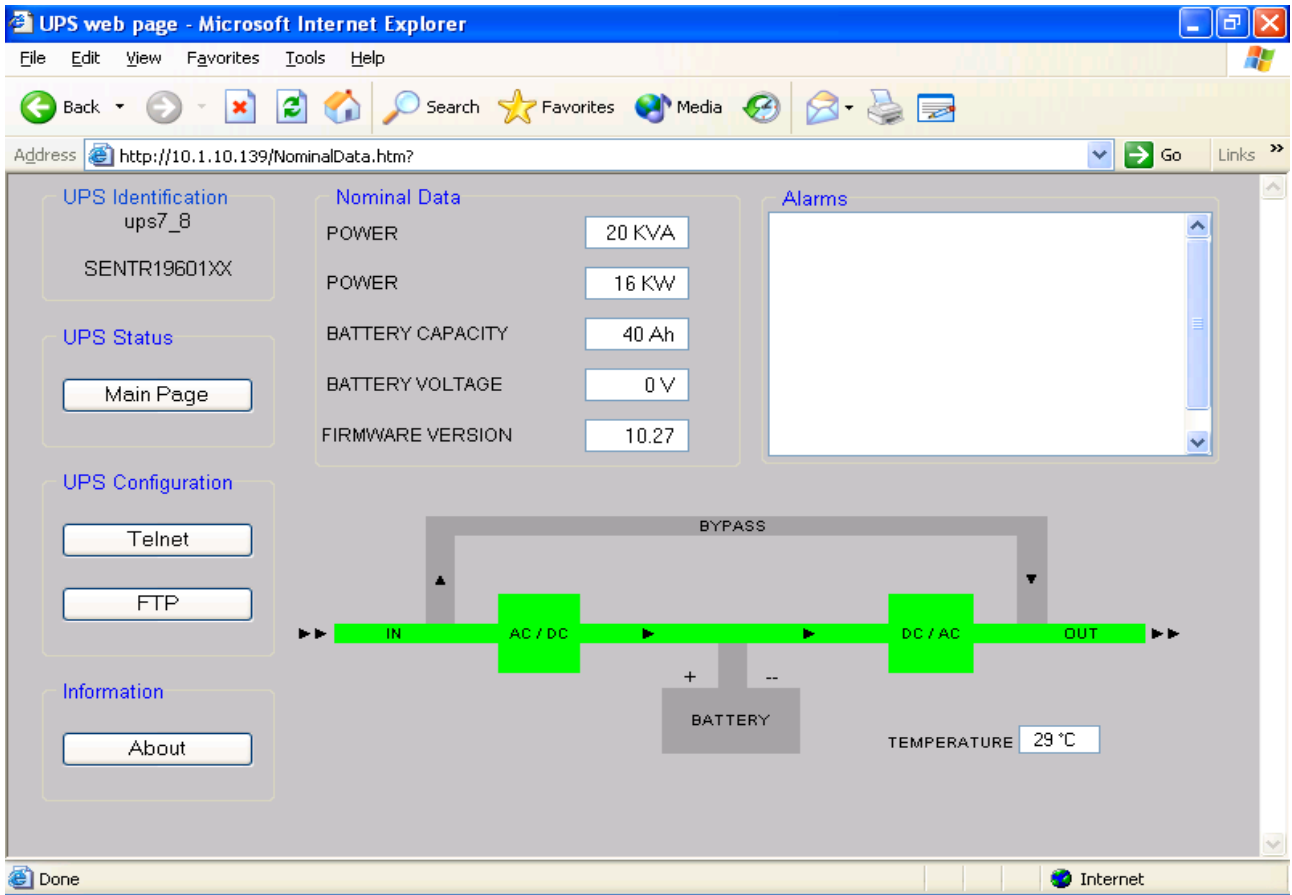
Using the HTTP (Hyper Text Transfer Protocol), the status of the UPS can be monitored by means of a web browser without having to install additional software. All the most popular web browsers (Internet Explorer, Safari, Firefox, Netscape Navigator, Konqueror, Opera) are supported. Once the hostname or the *NetMan plus* IP address has been inserted in your web browser, a screen like the one shown below will be displayed, with the main UPS operating data.



Example of display via HTTP

The following buttons are found on the left-hand side of the page:

- Nominal Data: opens a page displaying the nominal values of the UPS, the list of active alarms and a diagram of UPS operation (see image on next page)
- FTP: opens an FTP session (see paragraph "FTP")
- About: opens a page with copyright information



Example of "Nominal Data" window

SNMP

SNMP (Simple Network Management Protocol) is a communication protocol that allows a client (manager) to make requests to a server (agent). *NetMan plus* is an SNMP agent. To exchange information, manager and agent use an addressing technique called MIB (Management Information Base). There is an MIB file for each agent, defining which variables can be requested and the respective access rights. The agent can also send messages (TRAP) without a prior request from the manager, to inform the latter of particularly important events. SNMPv3 is the evolution of SNMP and introduces new important features related to security. (See paragraph "SNMPv3").

UDP

UDP (User Datagram Protocol) is a low level network protocol that guarantees speed in the exchange of data and low network congestion. It is the protocol used by the UPSMon software for monitoring and control of the UPS.

The UDP connection uses the UDP 33000 port by default but can be configured on other ports according to requirements.

FTP

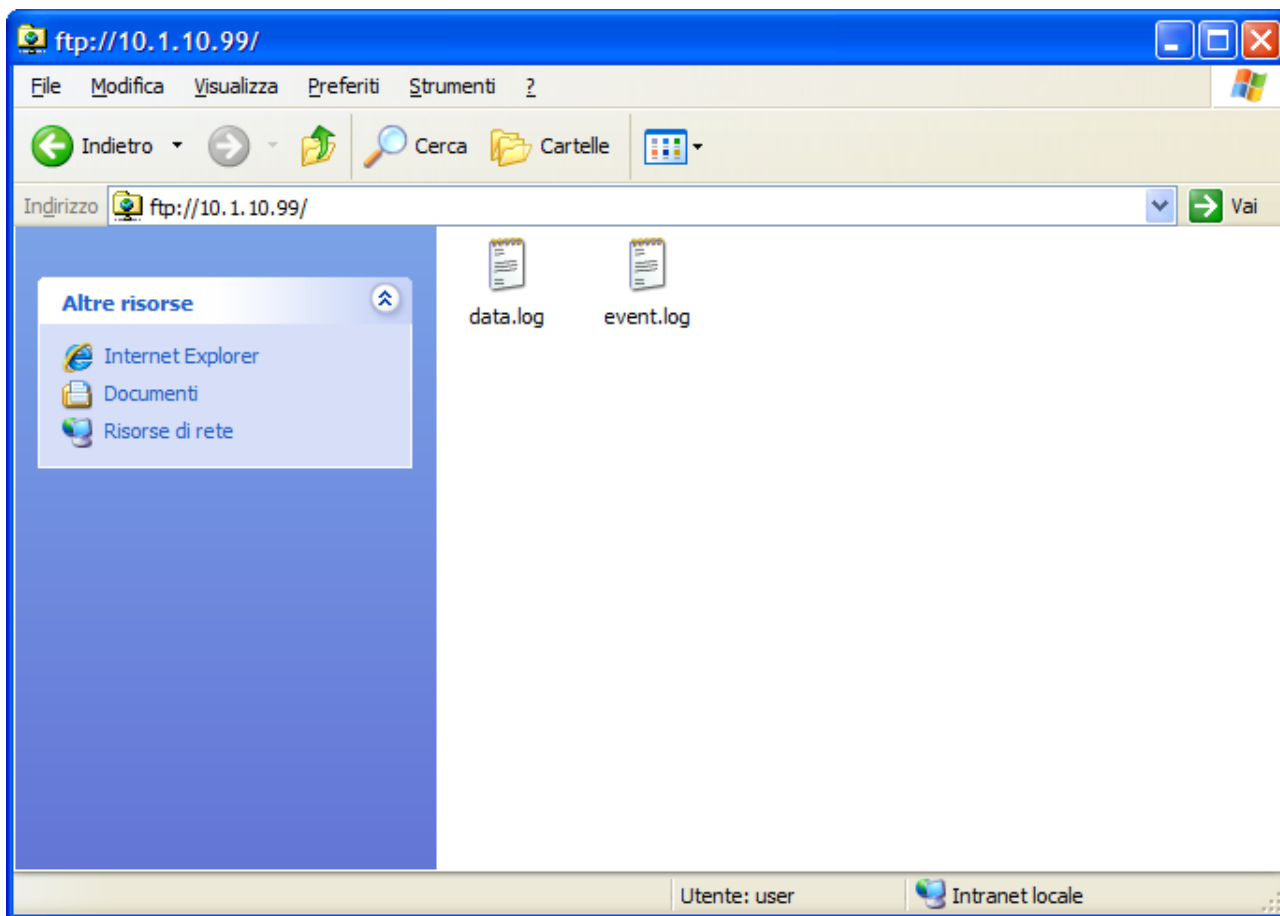
FTP (File Transfer Protocol) is a network protocol used for file exchange. *NetMan plus* uses this protocol for two purposes:

1. download of files of the UPS values and events history log archive (Datalog and Eventlog) with user “user”
2. download and upload of configuration files
3. firmware upgrade

In both cases a client FTP is required, configured with these parameters:

- Host: hostname or *NetMan plus* IP address
- User: see chapter “Users”
- Password: current password (default configuration: “password”)

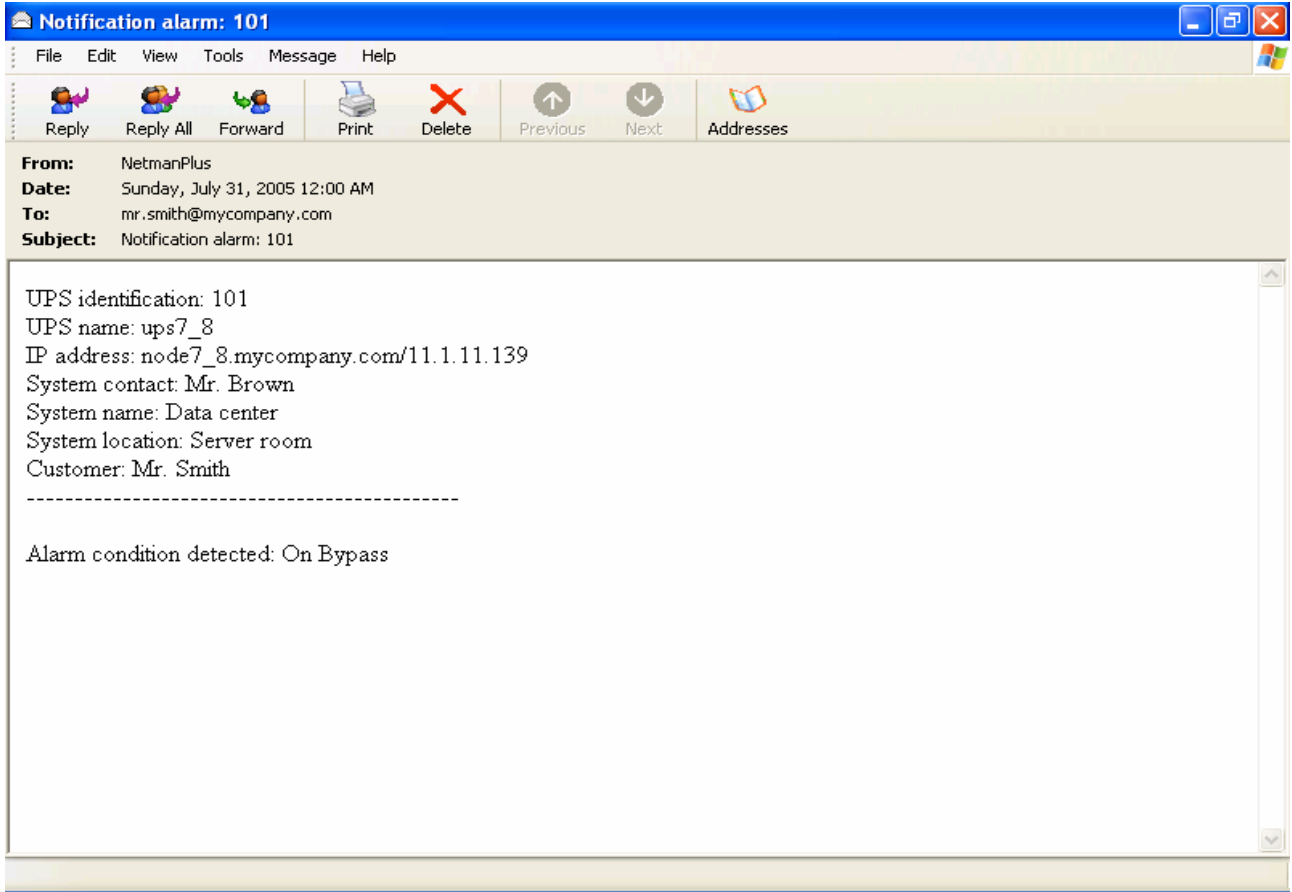
The connection can also be established using a web browser (all the most popular web browsers are supported), by inserting the following address: ftp://user@<address.NetMan plus>, where <address.NetMan plus> is replaced with the device’s real address. In this case a screen like the following will be displayed.



Example of FTP connection

Email

NetMan plus can send a notification e-mail if one or more alarm conditions occur. The e-mails can be sent to up to three recipients and they can be sent for seven different kinds of alarm. SMTP (Simple Mail Transfer Protocol) is the protocol used to send the e-mails. They are sent to an SMTP server on port 25. For more details, see paragraph "Configuration"



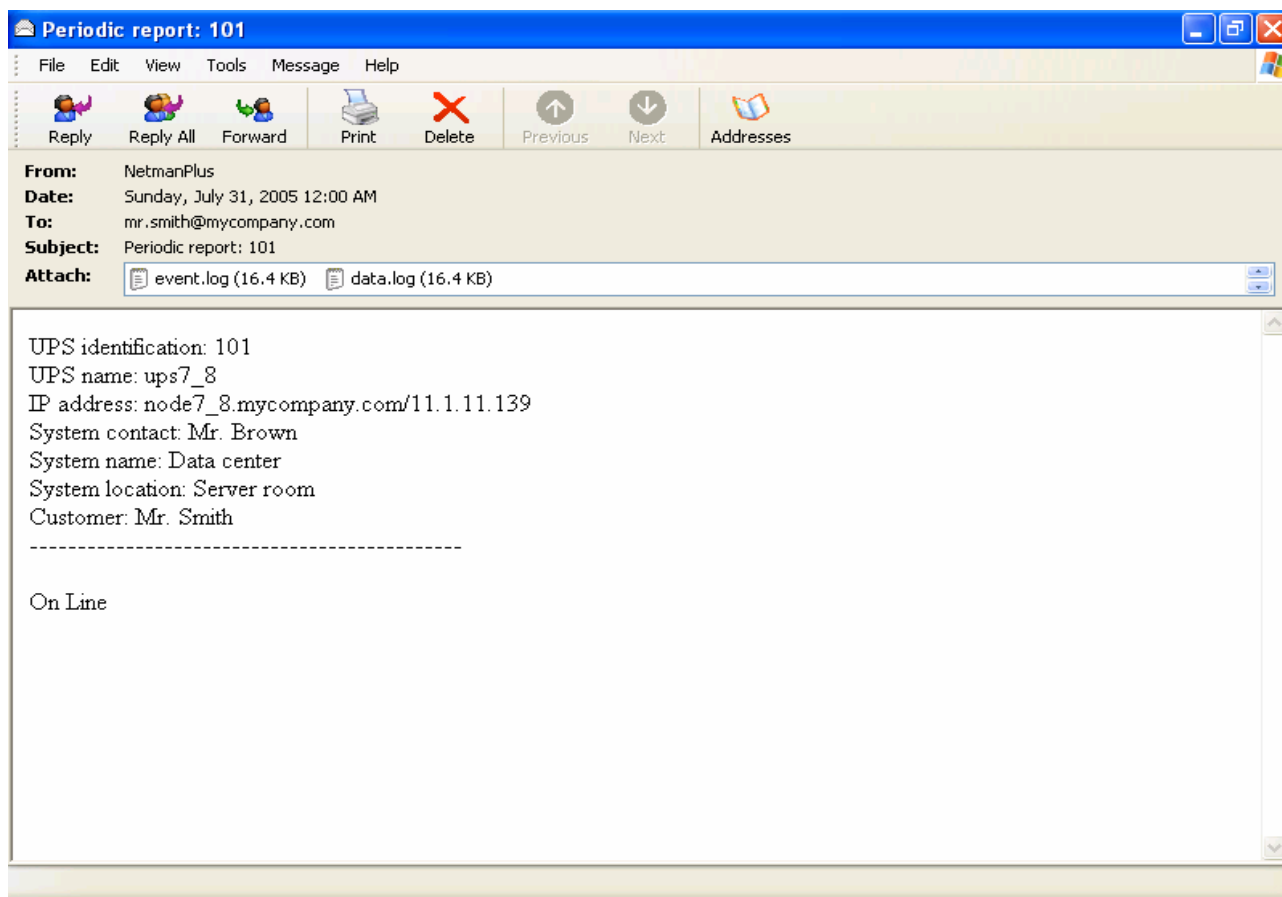
Example of notification e-mail

Reports

NetMan plus can send periodic e-mails with an attachment containing the files of the UPS values and events history log archive.

This service can be used to periodically save the history log archives.

The “Email” service must be enabled in order to send reports; the reports are sent to all the addresses configured for this service (for more details see paragraph “Configuration”).



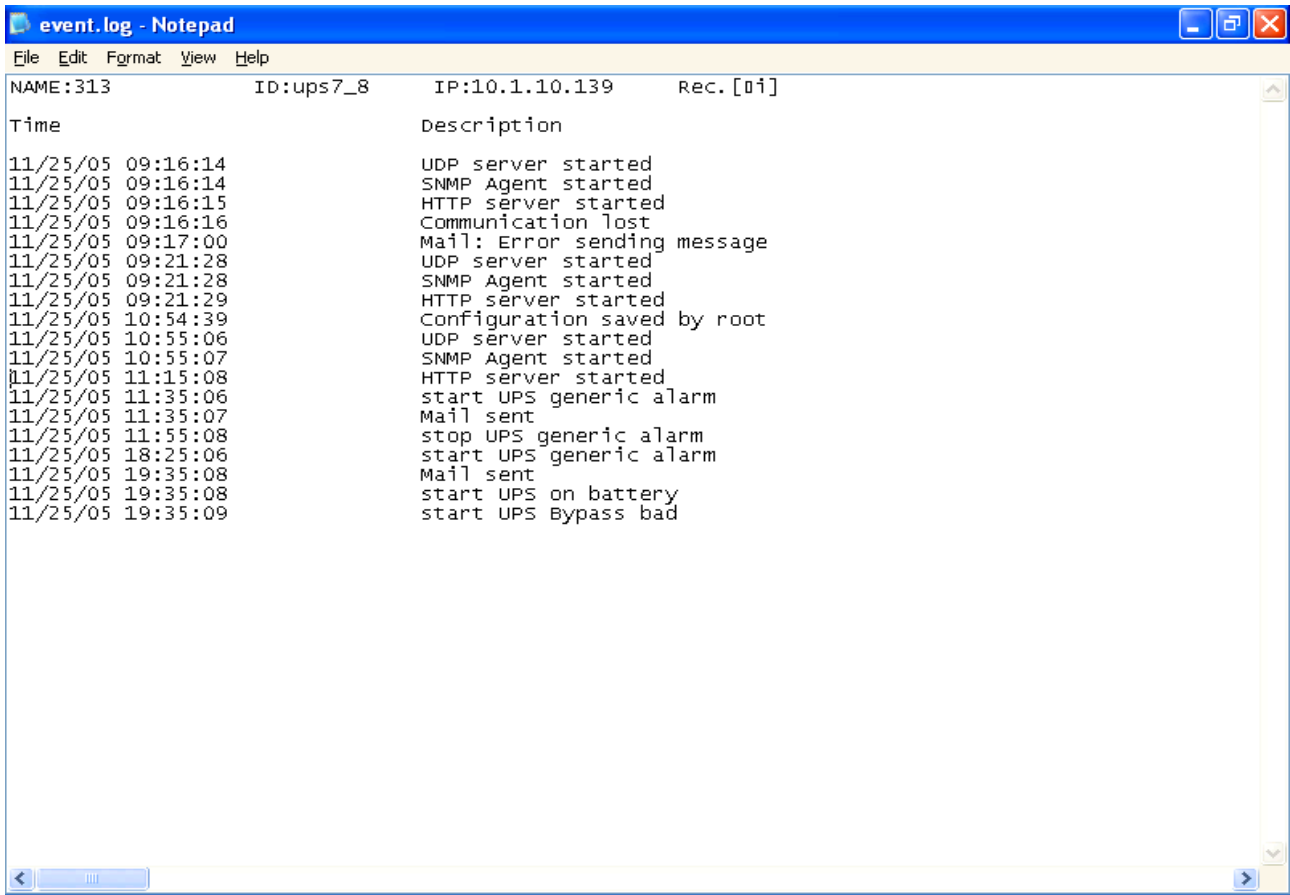
Example of report e-mail

UPS VALUES AND EVENTS HISTORY LOG ARCHIVE

NetMan plus records the UPS values (Datalog) and events (Eventlog) in a history log archive. The data are saved to file in text format and can be read either by means of an electronic spreadsheet (which allows the data to be ordered chronologically) or by any text editor. The format used to record the date and time is of the type: MM/DD/YY HH:MM:SS

Eventlog

The Eventlog service is always active and records all relevant UPS events in the 'event.log' file. The file can be downloaded via FTP or sent by e-mail using the "Email report" service. The data are saved in circular list mode, thus the most recent data are saved by overwriting the oldest data.



```
event.log - Notepad
File Edit Format View Help
NAME:313          ID:ups7_8      IP:10.1.10.139  Rec. [01]
Time             Description
11/25/05 09:16:14  UDP server started
11/25/05 09:16:14  SNMP Agent started
11/25/05 09:16:15  HTTP server started
11/25/05 09:16:16  Communication lost
11/25/05 09:17:00  Mail: Error sending message
11/25/05 09:21:28  UDP server started
11/25/05 09:21:28  SNMP Agent started
11/25/05 09:21:29  HTTP server started
11/25/05 10:54:39  Configuration saved by root
11/25/05 10:55:06  UDP server started
11/25/05 10:55:07  SNMP Agent started
11/25/05 11:15:08  HTTP server started
11/25/05 11:35:06  start UPS generic alarm
11/25/05 11:35:07  Mail sent
11/25/05 11:55:08  stop UPS generic alarm
11/25/05 18:25:06  start UPS generic alarm
11/25/05 19:35:08  Mail sent
11/25/05 19:35:08  start UPS on battery
11/25/05 19:35:09  start UPS Bypass bad
```

Example of Eventlog

Datalog

The Datalog service records the main UPS data in the 'data.log' file. The file can be downloaded via FTP or can be sent by e-mail using the "Email report" service. The following data are monitored:

- Input voltage line 1
- Input voltage line 2
- Input voltage line 3
- Input frequency
- Output voltage line 1
- Output voltage line 2
- Output voltage line 3
- Load on line 1
- Load on line 2
- Load on line 3

The interval of time between one recording and the next (Log frequency) can be configured by the user (see paragraph "Miscellaneous Menu"). The data are saved in circular list mode, thus the most recent data are saved by overwriting the oldest data. Data for up to 256 different points of time can be recorded.

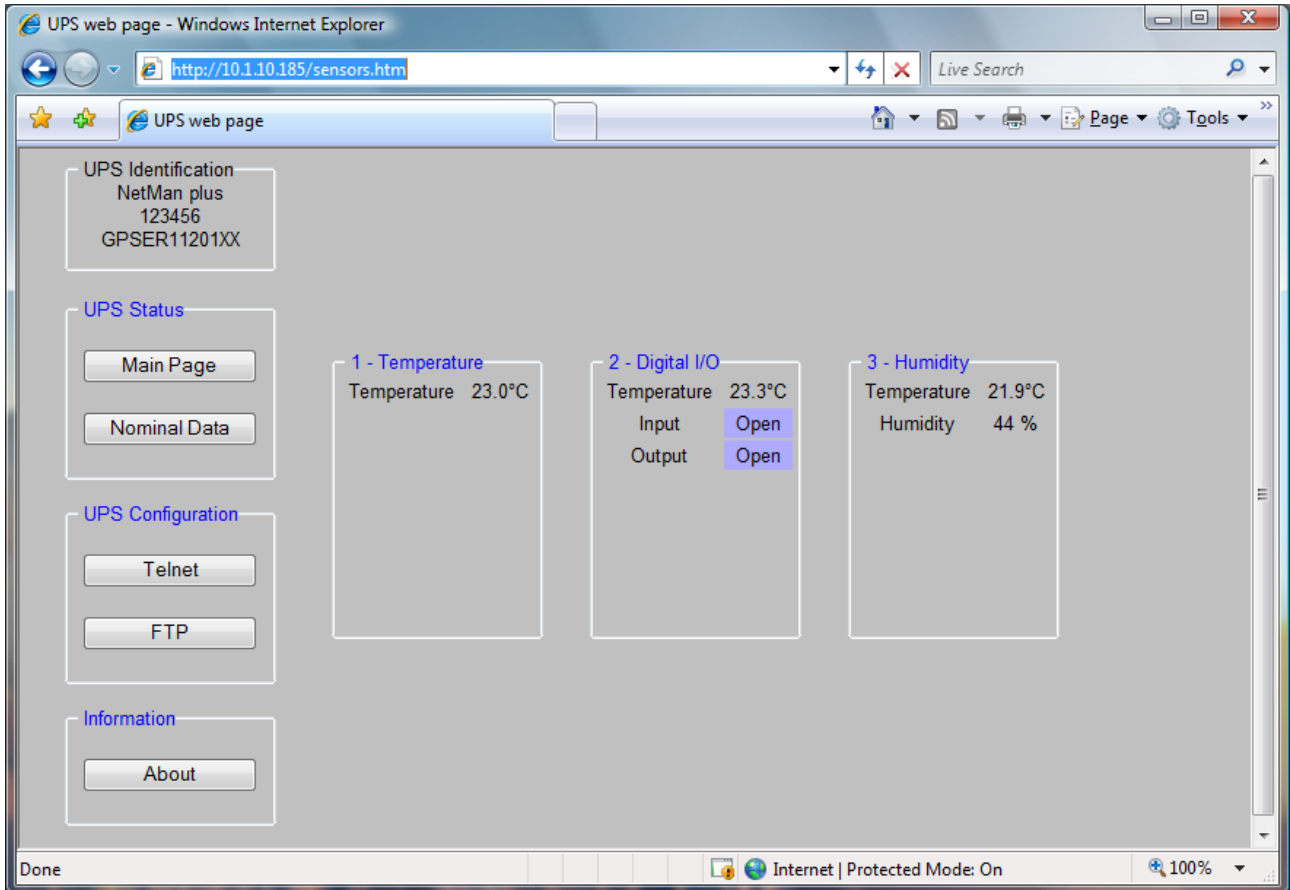
NAME:313	ID:ups7_8	IP:10.2.10.5	Rec. [*@]							
Time	v11	v12	v13	Fin	Vo1	Vo2	Vo3	Po1	P	
11/25/05 10:06:15	218	218	220	50.0	235	000	000	002	0	
11/25/05 10:06:20	220	218	220	50.0	235	000	000	002	0	
11/25/05 10:06:26	220	218	220	50.0	235	000	000	002	0	
11/25/05 10:06:32	220	218	220	50.0	235	000	000	002	0	
11/25/05 10:06:37	220	218	220	50.0	235	000	000	002	0	
11/25/05 10:06:43	220	218	220	50.0	235	000	000	002	0	
11/25/05 10:06:48	218	218	220	50.0	235	000	000	002	0	
11/25/05 10:06:54	220	218	220	50.0	235	000	000	002	0	
11/25/05 10:06:59	220	218	220	50.0	235	000	000	002	0	
11/25/05 10:07:05	218	218	220	50.0	234	000	000	002	0	
11/25/05 10:07:11	218	218	220	50.0	235	000	000	002	0	
11/25/05 10:07:16	220	218	220	50.0	235	000	000	002	0	
11/25/05 10:07:22	218	218	220	50.0	235	000	000	002	0	
11/25/05 10:07:27	218	216	218	50.0	235	000	000	002	0	
11/25/05 10:07:32	218	218	220	50.0	235	000	000	002	0	
11/25/05 10:07:38	218	218	218	50.0	235	000	000	002	0	
11/25/05 10:07:43	218	216	218	50.0	234	000	000	002	0	
11/25/05 10:07:49	218	216	218	50.0	235	000	000	002	0	
11/25/05 10:07:55	218	218	220	50.0	235	000	000	002	0	
11/25/05 10:08:00	218	218	218	50.0	235	000	000	002	0	
11/25/05 10:08:06	218	216	218	50.0	235	000	000	002	0	
11/25/05 10:08:11	218	216	218	50.0	235	000	000	002	0	
11/25/05 10:08:17	218	216	218	50.0	235	000	000	002	0	
11/25/05 10:08:23	218	216	218	50.0	235	000	000	002	0	
11/25/05 10:08:28	218	218	220	50.0	236	000	000	002	0	
11/25/05 10:08:34	218	218	220	50.0	234	000	000	002	0	
11/25/05 10:08:39	218	216	220	50.0	235	000	000	002	0	
11/25/05 10:08:44	218	218	220	50.0	235	000	000	002	0	
11/25/05 10:08:50	218	218	220	50.0	235	000	000	002	0	
11/25/05 10:08:55	218	216	218	50.0	235	000	000	002	0	
11/25/05 10:09:01	218	216	220	50.0	236	000	000	002	0	
11/25/05 10:09:06	218	218	218	50.0	235	000	000	002	0	
11/25/05 10:09:12	218	218	218	50.0	235	000	000	002	0	
11/25/05 10:09:17	218	218	220	50.0	235	000	000	002	0	
11/25/05 10:09:23	218	218	220	50.0	235	000	000	002	0	
11/25/05 10:09:28	218	218	220	50.0	234	000	000	002	0	

Example of Datalog

ENVIRONMENTAL SENSORS (OPTIONAL)

Is possible to connect to *NetMan plus* the environmental sensors for monitoring temperature, humidity and digital input/output.

The information provided by these sensors can be showed with the UPS monitoring and control software or with a web browser (the HTTP service must be active).



The values provided by the sensors may also be requested with SNMP according to the RFC 3433 standard. The MIB file is inside the bundled CD.

Available sensors

- **Temperature:** detects the environmental temperature in °C.
- **Humidity & Temperature:** detects the relative humidity in % and the environmental temperature in °C.
- **Digital I/O & Temperature:** detects the environmental temperature in °C and features a digital input and a digital output.



It is possible to connect up to 3 environmental sensor to a *NetMan plus* (for sensor installation please see the sensors' manual).



It is necessary to modify the default jumper configuration for using the sensors. The use of the sensors does not allow the use of the modem.

INSTALLATION AND CONFIGURATION

INSTALLATION OF NETMAN 202 PLUS

1. Remove the cover of the UPS expansion slot by removing the two retaining screws.
2. Insert *NetMan 202 plus* in the slot.
3. Connect the device to the network by means of connector RJ-45 (see “Specifications for the cabling of the network cable”)
4. Secure *Netman* in the slot using the two screws removed previously.

CONFIGURATION

NetMan plus can be configured via usb or via ssh.



NetMan plus needs approx. 30 seconds to become operational from when it is powered up; before this time the device may not respond to commands that are sent to it

Configuration via USB

To configure *NetMan plus* via USB, it is necessary to:

- Connect, with the USB cable provided, the micro-USB port with the USB port of the PC
- execute the software HyperNetman
- press the “Enter” key of the PC
- at the login prompt, enter “admin”
- at the password prompt, enter the current password (default configuration: “admin”)



During password’s typing, no character is shown.

Once login has been effected, the screen of the start menu is displayed. From this screen it is possible to access the various menus to change *NetMan plus* settings (see paragraph “Main configuration menu” and following paragraphs).

Note: at the first login it is necessary to access with user admin (see chapter “Users”).

Configuration via ssh

To configure *NetMan plus* via ssh it is necessary to:

- execute a ssh client on a PC connected in a network to *NetMan plus* set with the IP address of the device to be configured
- at the login prompt, enter “admin”
- at the password prompt, enter the current password (default configuration: “admin”)



During password’s typing, no character is shown.

Once login has been effected, the screen of the start menu is displayed. From this screen it is possible to access the various menus to change *NetMan plus* settings (see paragraph “Main configuration menu” and following paragraphs).

Note: at the first login it is necessary to access with user admin (see chapter “Users”).

Saving the configuration and applying the changes

In order to make the new configuration effective, it is necessary to save it in the flash memory; this action automatically reboot the device (see paragraph “Menu *Save and load*”).



The clock settings (see paragraph “*Time settings* Menu”) become effective without saving.

Users

It is possible to access to NetMan 202 plus with various users:

- admin (password admin): user with right to modify the configuration
- fwupgrade (password fwupgrade): user with right to upgrade the firmware
- user (password user): user with right to read but not modify the configuration and the log

Start menu

```
Netman 202 plus

Setup.....:<--
View status....:
Change password:

Press [ESC] for Logout
SysVer. 0.0 - AppVer. 00.00
```

Select Setup to enter main configuration menu.
Select View status to see the status of the device (UPS).
Select Change password to modify the password.

Main configuration menu

The main configuration menu displays a screen like the following:



From this main menu it is possible to access the various submenus, the function of each of which is shown in the table below.

Menu	Function
IP config	To configure the network parameters
Time setting	To configure the internal clock
UPS config	To configure the type of UPS connected
Services 1	To activate and/or deactivate device services
Services 2	
Security	To configure the password and access to the network
Save and load	To save a configuration thus making it effective in the event of a device restart

To move within this menu and the following menus, use the keys as described in the following table; the arrow or the cursor shows the current selection.

Key	Function
Direction keys (Arrow up, down, right, left)	To move the cursor within the menus
Tab	Goes on to next option
Enter ⁽¹⁾	Choice of submenu
	Confirmation of characters entered
Esc ⁽¹⁾	Exit main menu ⁽²⁾
	Return to previous menu

⁽¹⁾ Some keys can have a different function depending on the menu.

⁽²⁾ To exit from a menu a confirmation ('Y' or 'N') is required after pressing the ESC key.

The screen also displays some messages describing the kind of configuration data displayed and the status of the UPS. The meaning of these messages is described below.

- Data from flash: means that the configuration has been loaded from the flash memory
- Default data: means that the configuration has been reset to the default values

Here is a graphical representation of the menus and submenus:



IP config menu

```

  /-----/
  | IP config |
  /-----/

Hostname.....:ups_server
IP address/DHCP:dhcp
Netmask.....:
Gateway.....:
Primary DNS...:
Secondary DNS..:
Mailhost.....:
```

With this menu the main network parameters can be set as described in the following table.

Field	Parameters to be inserted
Hostname	Enter the <i>NetMan plus</i> host name
IP address/DHCP	Enter the IP address for a static IP; enter "DHCP" for a dynamic IP
Netmask	Enter the netmask to be used together with the static IP address
Gateway	Enter the name or the address of the network gateway
Primary DNS	Enter the name or the address of the preferred DNS to be used
Secondary DNS	Enter the name or the address of the alternative DNS to be used
Mailhost	Enter the name or the address of the SMTP server to be used to send e-mails. ⁽¹⁾

⁽¹⁾ Ensure that the SMTP server accepts connections on port 25.



If a static IP address is assigned to the device, all the fields must be configured with the network parameters. If a dynamic IP address is assigned, just enter 'dhcp' in the "IP Address/DHCP" field and provide a hostname; all the other options should be ignored because these are automatically configured with DHCP

After pressing “ESC” and “Y” to confirm exit from the menu, a screen is displayed summarizing the current settings (see image below). Press the “ENTER” key to return to the main menu. The configuration must however be saved to make it effective after restart of the device (see “Save and load” menu).

```
Hostname           : ups_server.mynetwork.domain
Current IPv4 addr.: 10.1.10.187/16 (255.255.0.0) (active)
Current IPv6 addr.: fe80:0:0:0:260:35ff:fe02:4184/64 (active)
Default IPv4 GW    : 10.1.4.1
Ethernet Address   : 00:60:35:02:41:84
Primary DNS        : 10.1.4.2
Secondary DNS      : 10.3.4.1
DNS Timeout        : 0 (ms)
DHCP Server        : 10.1.5.1
DHCP Enabled       : true
DHCP Lease Ends    : Sun Jun 05 00:00:12 GMT 2005
                   : (66 hr, 40 min, 38 seconds left)
Mailhost           : mymailserver
Restore From Flash: Not Committed
```

Time setting menu

```
Time setting

Set time.....:<--
Set timezone...:
Sync with NTP..:
```

From this menu the time and date of the device can be set as described in the following table.

Command	Description
Set time	To configure the time and date manually
Set timezone	To configure the time zone
Sync with NTP	To synchronize the clock with an NTP server

Pressing the “ENTER” key corresponding to the “Set time” command displays a screen like the one shown below.

```
Current date is Wed Jun 15 08:09:40 GMT 2005

Insert new date and clock time in this form:
MMDDYYYYHHMMSS
06152005081000

Current date is Wed Jun 15 08:10:00 GMT 2005
```

Enter the date and time in the format shown, then press the ENTER key and then “ESC” to exit.

Pressing the “ENTER” key corresponding to the “Set timezone” command displays a screen where is possible to modify the timezone. Examples of available timezones:

Europe/Rome
CET
GMT
Asia/Singapore
Etc/GMT+4
SystemV/HST10

Enter the time zone selected from those shown, then press the ENTER key and then “ESC” to exit.

Pressing the “ENTER” key corresponding to the “Sync with NTP” command displays a screen like the one shown below.

```
Current date is Thu Jun 16 14:17:06 ECT 2005

Insert IP Address or host name of the NTP server to synchronize time:
leg
Synchronizing time to server: server.mycompany
New system time: 16 Jun 2005 12:17:00 GMT

Current date is Thu Jun 16 14:17:01 ECT 2005
```

Enter the name or the address of the NTP server with which the device is to be synchronized. In this case the time has to be within the GMT time zone, thus it may be necessary to correct the current time zone with the “Set timezone” command.

UPS config menu

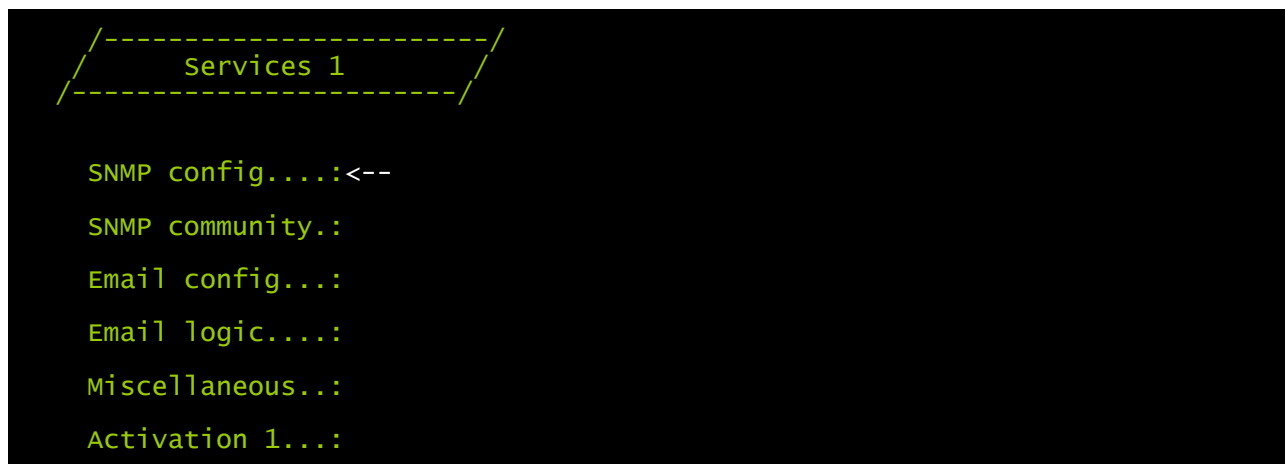


With this menu the UPS parameters must be set as described in the following table, for the UPS to be able to communicate correctly with the device.

Field	Parameters to be inserted
PRTK Code	Enter the PRTK code indicated at the back of the UPS ⁽¹⁾
Name	Enter the identifying name of the UPS
UPS Address	Insert 1
Serial number	Enter the UPS identification code

⁽¹⁾ The PRTK code is formed of 12 alphanumeric characters.

Services 1 menu



With this menu the configuration screens of the various services can be accessed as described in the following table.

Menu	Function
SNMP config	To configure the SNMP service
SNMP community	
Email config	To configure the e-mail service
Email logic	
Miscellaneous	To configure the other options
Activation 1	To configure the services to be activated



As well as being configured, the services must also be activated to function correctly (see paragraph “*Activation* menu”). It is recommended to activate only the services used.

SNMPv1 config menu

```
SNMPV1 config

Trap receiver 1:powernetguard
Trap receiver 2:192.168.5.96
Trap receiver 3:
Trap receiver 4:
Trap receiver 5:
Trap receiver 6:
Trap receiver 7:
```

With this menu the IP addresses to which traps are sent can be configured. Traps are SNMP messages that are sent to an SNMP manager for alarm notification. Traps can be sent to seven different hosts.

SNMPv1 community menu

```
SNMPV1 community

Get community.:public
Set community.:private
Trap community.:public
```

With this menu the protection password of the SNMP messages (SNMP Communities) can be configured as described in the following table.

Field	Parameters to be inserted
Get community	Enter the community for read access
Set community	Enter the community for write access
Trap community	Enter the community for traps

Email logic menu

Email Logic				
	Email 1	Email 2	Email 3	Logic:
UPS Lock.....:	X<--	0	0	And
Ovrload/Ovrtemp:	X	0	0	And
UPS Failure....:	X	0	0	And
On bypass.....:	X	0	0	And
Battery work...:	X	0	0	And
Battery low....:	X	0	0	And
Communic lost..:	X	0	0	And

With this menu it can be established to which addresses the e-mails will be sent when certain events occurs. One or more addresses can be associated with each event and in the latter case, when the event occurs, notification e-mails will be sent to all the addresses associated with it.



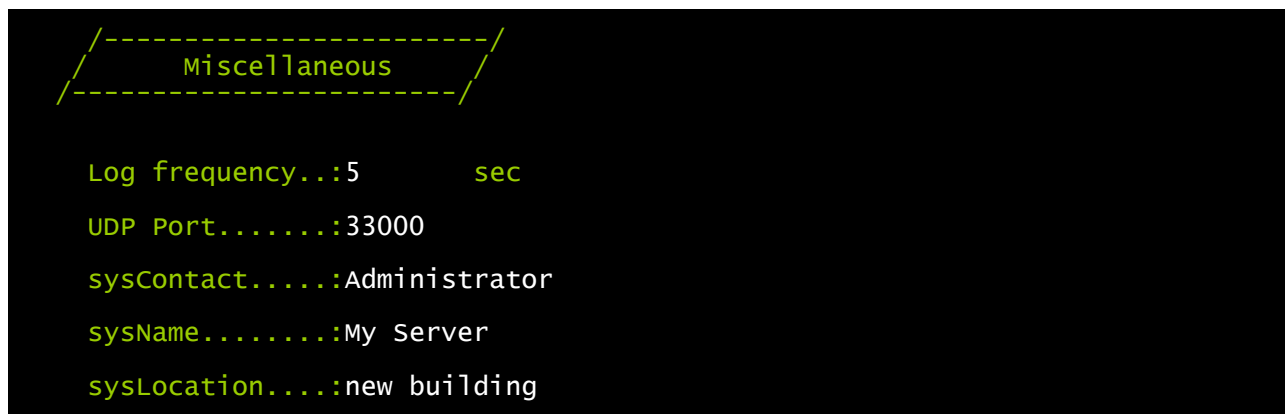
Use the ENTER key to change the selected configuration ("X" or "0").

- X: when the event occurs, *NetMan plus* sends a notification e-mail to the corresponding addresses (see "*Email logic menu*" to set the addresses);
- 0: when the event occurs, *NetMan plus* does not send a notification e-mail to the corresponding addresses;

The following table describes the meaning of the events. These can vary depending on the UPS connected.

Event	Meaning
UPS Lock	UPS is locked
Ovrload/Ovrtemp	UPS in overload or in overtemperature
UPS Failure	Failure of the UPS
On bypass	Operation from bypass
Battery work	Operation from battery
Battery low	Battery low
Communic lost	Communication between the UPS and the device has been interrupted
SENTR level 2	Presence of an internal UPS failure (this condition emulates the level of modem alarm for UPSs of the SENTR type)
SENTR level 3	Presence of a failure in the UPS, excluding those envisaged in the previous point (this condition emulates the level of modem alarm for UPSs of the SENTR type)

Miscellaneous menu



With this menu further device parameters can be configured as described in the following table.

Field	Parameters to be inserted
Log frequency	Enter the delay, measured in seconds, between one data log and the next (see paragraph "Datalog")
UDP Port	Enter the port where the UDP service is started ⁽¹⁾
sysContact	Enter the string to be associated with these SNMP variables
sysName	
sysLocation	

⁽¹⁾ This port must be the same as configured in the UPSMon software

Activation 1 menu

```
Activation 1

Enable telnet...:[ON/off]<--
Enable HTTP....:[ON/off]
Enable Modem Tx:[on/OFF]
Enable SNMP....:[ON/off]
Enable UDP.....:[ON/off]

Enable FTP.....:[ON/off]
Enable DataLog.: [ON/off]
Enable Modem Rx:[on/OFF]
Enable Email...:[ON/off]
Enable Report...:[ON/off]
```

With this menu the services implemented in *NetMan plus* can be activated or deactivated:



Use the ENTER key to change the selected configuration (“ON” or “OFF”).

- ON (green characters): service active
- OFF (red characters): service not active

It is recommended to activate only the services used.

Services 2 menu

```
Services 2

WakeOnLan addr.:<--
WakeOnLan delay:
Activation.2...:
Sensors config :
I/O Sensors....:
Threshold sens.:
```

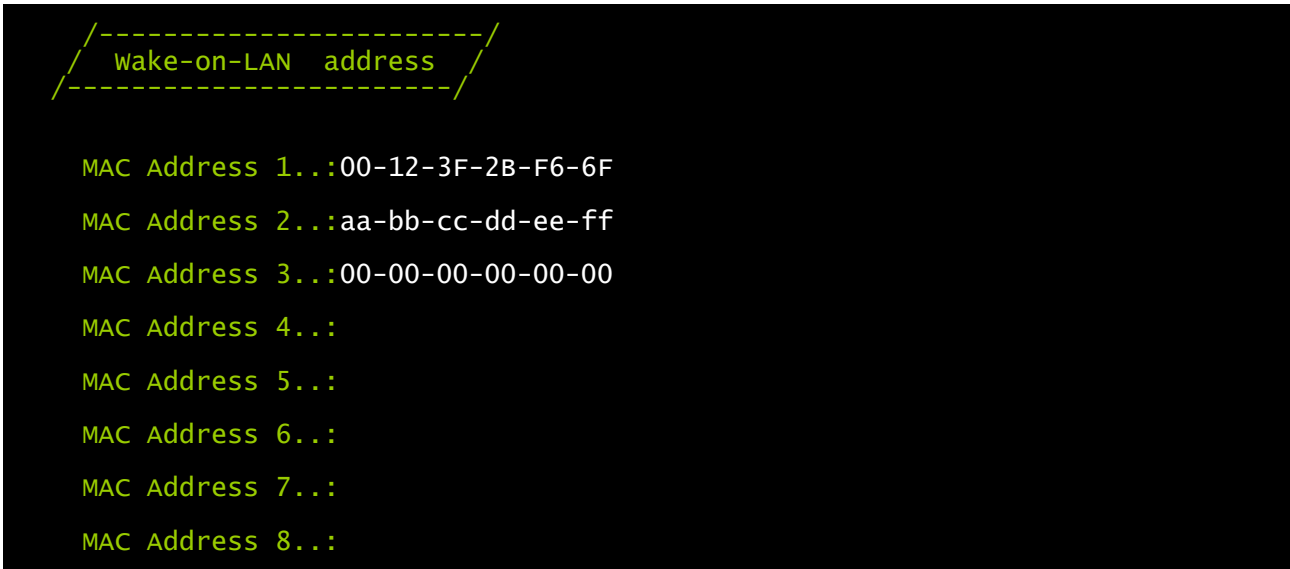
With this menu the configuration screens of the various services can be accessed as described in the following table.

Menù	Funzione
WakeOnLan addr.	To configure the Wake-on-LAN service
WakeOnLan delay	
Activation 2	To configure the services to be activated
Sensors. config	To configure the environmental sensors
I/O Sensors	
Threshold sens	



As well as being configured, the services must also be activated to function correctly (see paragraph “*Activation 2* menu”). It is recommended to activate only the services used.

Wake-On-LAN address menu

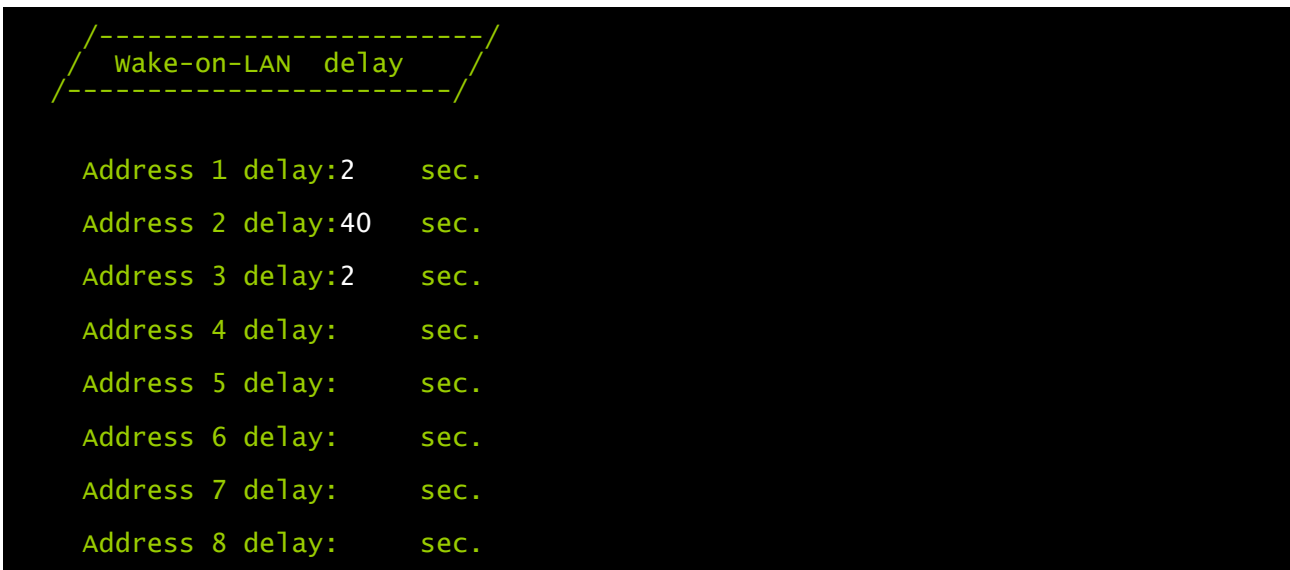


With this menu is possible to insert up to 8 MAC address to execute Wake-on-LAN.



Please make sure that your PC supports this function, and that it is correctly configured.

Wake-On-LAN delay menu



With this menu is possible to insert the delay times for each Wake-on-LAN.

Activation 2 menu

```
Activation 2

Enable Serial N:[ON/off]<--
Enable Sensors.: [ON/off]
Enable WOL      : [on/OFF]
```

With this menu the services implemented in *NetMan plus* can be activated or deactivated:



Use the ENTER key to change the selected configuration (“ON” or “OFF”).

- ON (green characters): service active
- OFF (red characters): service not active

It is recommended to activate only the services used.

Sensors Config menu



To enter on the “Sensors config” menu is necessary to enable the “Sensors” service (Activation 2 menu) and to save the configuration (Save and load menu).

```
Sensors Devices

Press [C] to change sensors, [E] to exit
```

Enter on the “Config sensor” menu, connect the first sensor and press “C”. After some instants the device will be recognized and the device will be given an identifier number [1]. Connect the next sensor, if present, and press “N”. After some instants the device will be recognized and the device will be given an identifier number [2]. Repeat the procedure for all the sensors and when the configuration is finalized press “Y”.

```
Sensors Devices
[1] Sensor Digital I/O
    + Temperature (140000009A204C28)
    + Digital I/O (220000003B8C9F12)
    + 1 Input
    + 1 Output
[2] Sensor Digital I/O
    + Temperature (510000009A154228)
    + Digital I/O (BB0000003BA2FF12)
    + 1 Input
    + 1 Output
[3] Sensor Temperature (F100000013BE0628)
    + Temperature
[4] Sensor Temperature (6C0000009F6D6128)
    + Temperature
[5] Sensor Humidity (4D00000083FF3326)
    + Humidity
    + Temperature

Press [Y] to confirm, [N] to insert a new sensor
```



For proper working of the devices, it is necessary to add just one device for each iteration and wait that it is recognized by *NetMan plus*.

Example: how to connect a *Temperature* sensor, a *Humidity & Temperature* sensor and a *Digital I/O & Temperature* sensor in exactly this order.

```
Sensors Devices

Press [C] to change sensors, [E] to exit
```

Connect the first sensor (*Temperature*), and press “Y”.

```
Sensors Devices
[1] Sensor Temperature (F100000013BE0628)
    + Temperature

Press [Y] to confirm, [N] to insert a new sensor
```

Wait until the first sensor is identified and then connect the second sensor (*Humidity & Temperature*), and press “N”.

```
Sensors Devices
[1] Sensor Temperature (F100000013BE0628)
    + Temperature
[2] Sensor Humidity (4D00000083FF3326)
    + Humidity
    + Temperature

Press [Y] to confirm, [N] to insert a new sensor
```

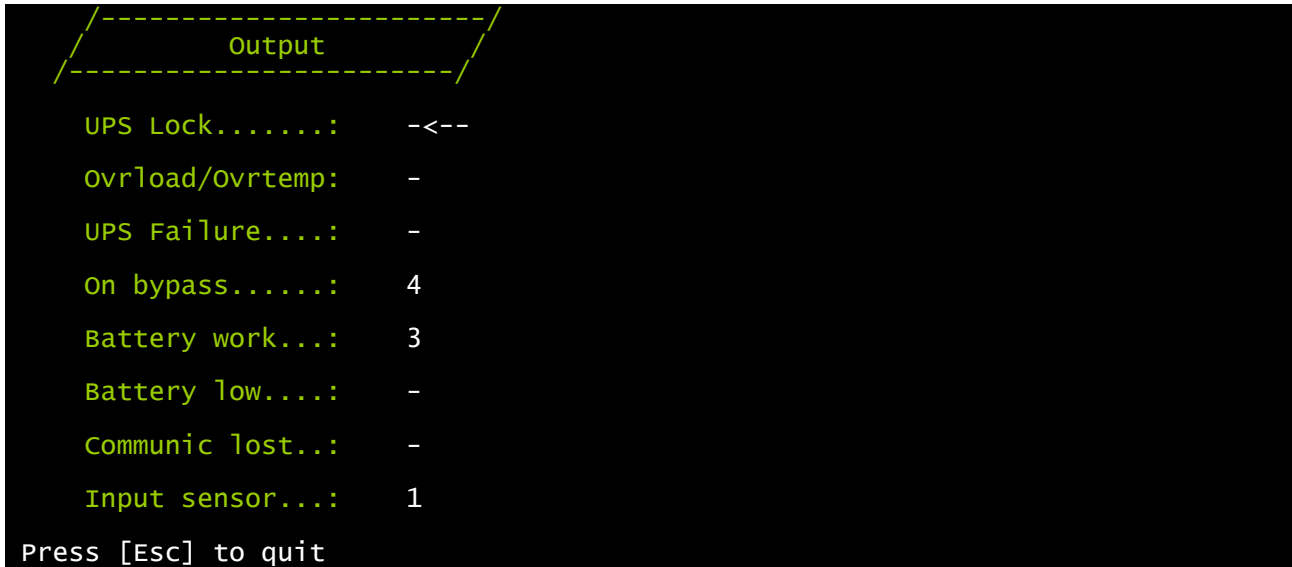
Wait until the second sensor is identified and then connect the third sensor (*Digital I/O & Temperature*), and press “N”.

```
Sensors Devices
[1] Sensor Temperature (F100000013BE0628)
    + Temperature
[2] Sensor Humidity (4D00000083FF3326)
    + Humidity
    + Temperature
[3] Sensor Digital I/O
    + Temperature (510000009A154228)
    + Digital I/O (BB0000003BA2FF12)
    + 1 Input
    + 1 Output

Press [Y] to confirm, [N] to insert a new sensor
```

Press “Y” to confirm.

I/O Sensors menu



With this menu is possible to associate a digital output of the installed sensors to one or more events of the UPS. The output will be closed when the associated event happens.



Press ENTER to select the output.

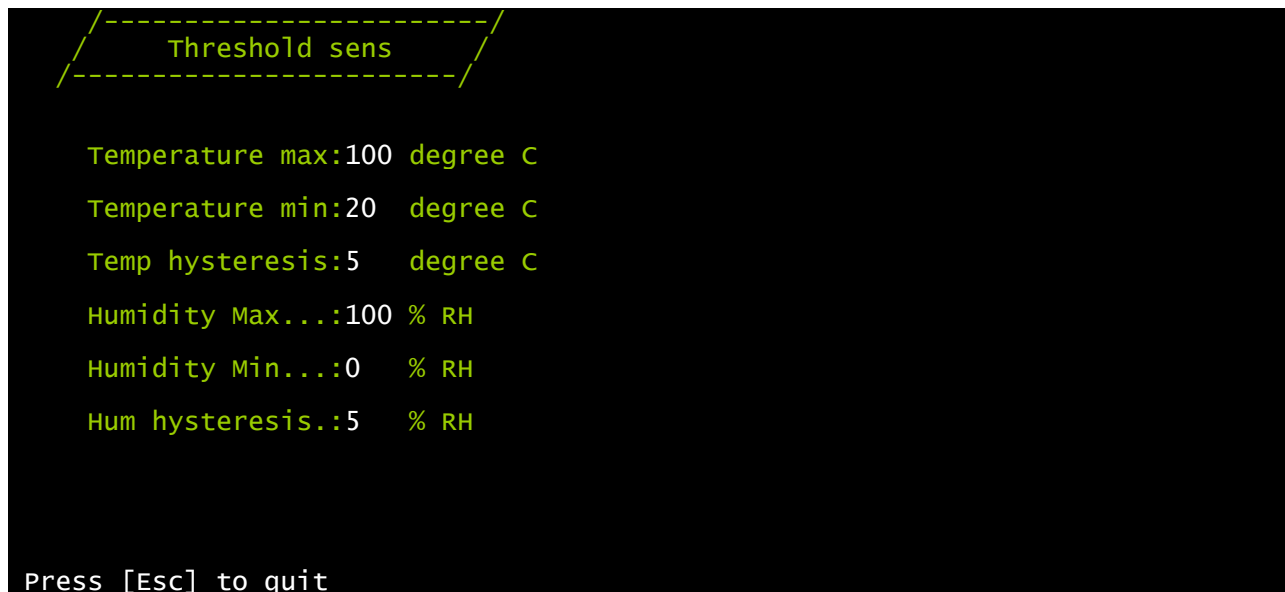
The identification number is the same which is associated to the sensor during installation.

The following table describes the meaning of the events. These can vary depending on the UPS connected.

Event	Description
UPS Lock	UPS is locked
Ovrload/Ovrtemp	UPS in overload or in overtemperature
UPS Failure	Failure of the UPS
On bypass	Operation from bypass
Battery work	Operation from battery
Battery low	Battery low
Communic lost	Communication between the UPS and the device has been interrupted

The "Input sensor" event allows to associate a digital output with the digital input of the *Digital I/O & Temperature* sensor which is installed with the lowest identification number (the first that was detected during configuration). The state of the input (open/closed) is reported to the output of the selected sensor.

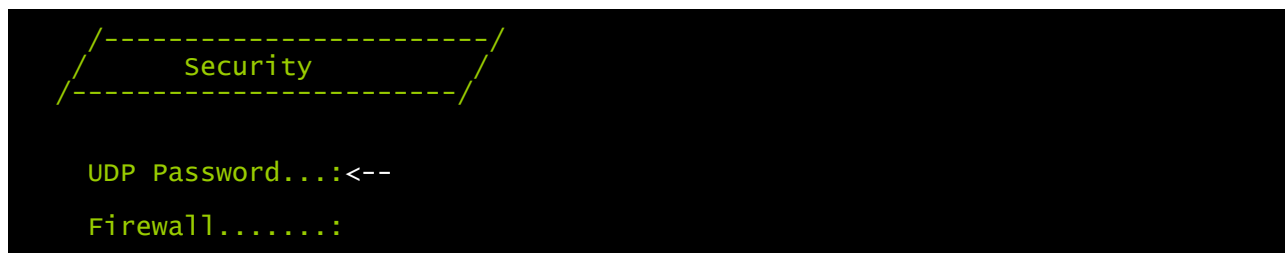
Threshold sens menu



With this menu is possible to set the alarm threshold for humidity and temperature sensors. When exceeding the threshold, a SNMP alarm trap is sent. A trap is sent every minute until the alarm is active. The alarm ceases to be active when the outbound value (temperature or humidity) is under the threshold with the degree of hysteresis that is configured. (Example: with a maximum temperature of 30°C and 3°C hysteresis, the alarm is activated when the temperature reaches 30°C and is removed when the temperature at 27°C).

Menu	Significato
Temperature max	Threshold for maximum temperature
Temperature min	Threshold for minimum temperature
Temp hysteresis	Hysteresis for removing temperature alarm (high and low)
Humidity max	Threshold for maximum humidity
Humidity min	Threshold for minimum humidity
Hum hysteresis	Hysteresis for removing humidity alarm (high and low)

Security menu



From this menu the setup password, the UDP password and the firewall can be configured as described in the following table.

Menu	Function
UDP Password	To change the password used for UDP/UPSMon communication ⁽²⁾
Firewall	To configure access from the network

⁽¹⁾ default configuration: "password"

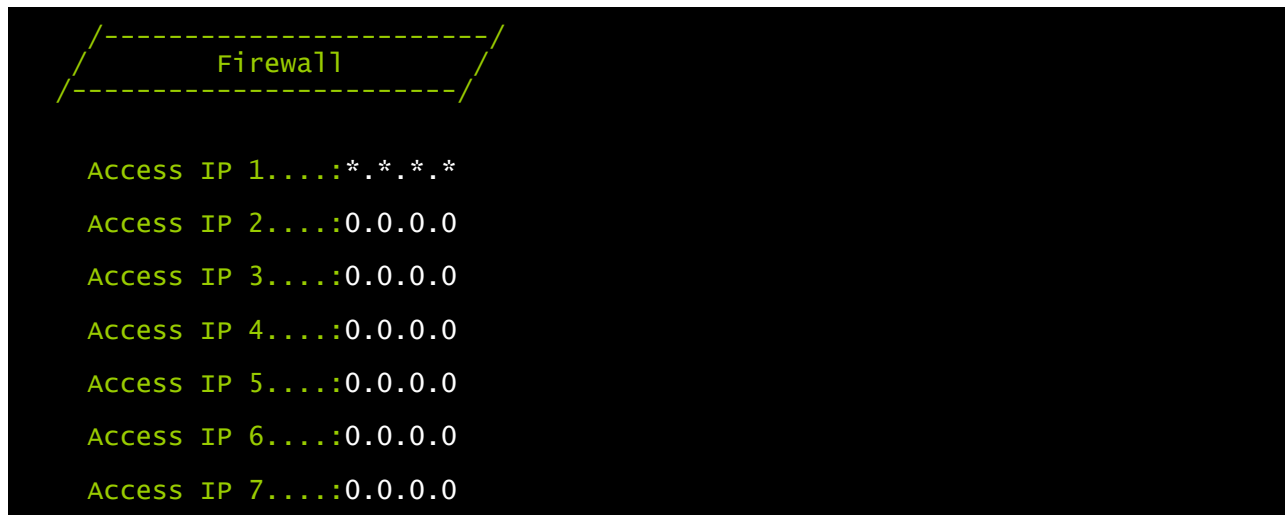
⁽²⁾ this password must be the same as the one used by the UPSMon software

Pressing the ENTER key corresponding to the "UDP Password" command displays a screen like the one shown below.



Enter, as requested, the new password.

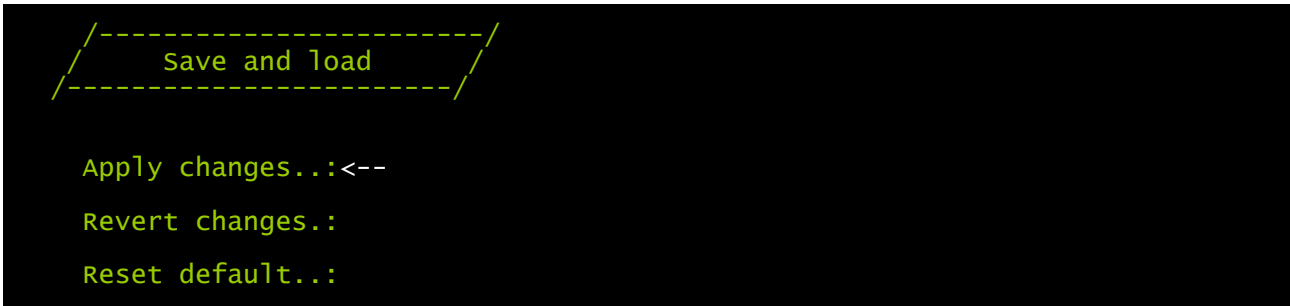
Pressing the ENTER key corresponding to the “Firewall” command displays a screen like the one shown below.



With this menu the IP addresses or hostnames of the devices enabled for communication with *NetMan plus* can be configured. The character “*” can be used for one or more fields of the IP address to indicate that all values between 0 and 255 are accepted in that field. The following table provides some possible configuration examples.

IP Access	Description
..*	All the devices present on the network are enabled to communicate with <i>NetMan plus</i> (default configuration)
10.1.10.*	The devices with addresses between 10.1.10.0 and 10.1.10.255 are enabled to communicate with <i>NetMan plus</i>
myserver.mydomain	Hostname of the device enabled to communicate with <i>NetMan plus</i>

Save and load menu



With this menu the configuration can be saved to make it effective or to load other configurations as described in the following table.

Function	Description
Apply changes	Saves the configuration in flash memory and then automatically restarts to make the changes effective
Revert changes	Cancels the changes and reloads the last saved configuration (excluding the clock -Time setting- configurations)
Reset default	Loads the default configuration

⁽¹⁾ see paragraph "Configuration of several devices"

SNMPv3 CONFIGURATION

For configuring SNMPv3 access, is necessary to edit snmp.conf. The file must be edited on a unix environment, because lines must end with "LF". This file can be downloaded and uploaded with FTP with user "admin" (default password is "admin").

If this file is not present, SNMPv1 will be used.

Each line of the file is parsed by netman 202 plus and must begin with one of these keyword:

- *#*: for comment, the line is skipped.
- *addUser*: for adding a new user and setting the passwords
- *addGroup*: for putting a user into a group
- *addAccessEntry*: for enabling access privileges to a group
- *addView*: for adding privileges
- *addManager*: for adding SNMP Manager which will receive SNMP traps.

The correct syntax for addUser is:

addUser <userName> <authProtocol> <privProtocol> <authPassword> <privPassword>

<userName> is the name of the user.

<authProtocol> is the protocol for authentication of this user during SNMP sessions.

Possible values are:

- *noauth* (no authentication will be used)
- *md5* (MD5 will be used for authentication)
- *sha* (SHA will be used for authentication)

<privProtocol> is the protocol for privacy of this user during SNMP sessions. Possible values are:

- *nopriv* (no privacy will be used)
- *des* (DES will be used for privacy)

<authPassword> is the password for authentication. It must be set to * when not used.

<privPassword> is the password for privacy. It must be set to * when not used.

The correct syntax for addGroup is:

addGroup <securityModel> <userName> <groupName>

<securityModel> is the security model. When using authentication and/or privacy, securityModel must be USM. Possible values are:

- *USM* (User-based Security Model with SNMPv3)
- *v2* (SNMPv2)
- *v1* (SNMPv1)

<userName> is the name of the user:

- for SNMPv3 must match one of the <userName> defined with addUser
- for SNMPv1/v2 this is the community string.

<groupName> is the name of the group.

The correct syntax for addAccessEntry is:

addAccessEntry <groupName> <contextName> <securityModel> <securityType>
<contextMatch> <readView> <writeView> <notifyView>

<groupName> is the name of the group to which this access right applies, must match one of the <groupName> defined with addGroup.

<contextName> is the name of the context.

<securityModel> is the security model that must be used in order to gain access to this access right, must match the <securityModel> defined with addGroup.

<securityType> is the minimum security level that must be used to gain access to this access right. Possible values are:

- *noauthnopriv* (no authentication and no privacy)
- *authnopriv* (authentication but no privacy)
- *authpriv* (authentication and privacy)

<contextMatch> the type of match required. Possible values are:

- *exact* (the context name must exactly match the value in contextName)
- *prefix* (the context name must match the first few starting characters of the value in contextName)

<readView> the authorized MIB view name used for providing read access, must match one of the <viewName> defined with addView.

<writeView> the authorized MIB view name used for providing write access, must match one of the <viewName> defined with addView.

<notifyView> the authorized MIB view name used for providing notify access, must match one of the <viewName> defined with addView.

The correct syntax for addView is:

addView <viewName> <subtree> <mask> <included>

<viewName> is the name of the view.

<subtree> is the OID subtree which defines a family of view subtrees when combined with the corresponding instance of <mask>.

<mask> the mask for filtering OID.

<included> the OID can be included or excluded. Possible values are:

- *included* (for including)
- *excluded* (for excluding)

The correct syntax for addManager is:

addManager <securityModel> <ipAddress> <userName> <securityType>

<securityModel> is the security type for the notification. Possible values are:

- *USM* (User-based Security Model with SNMPv3)
- *v2* (SNMPv2)
- *v1* (SNMPv1)

<ipAddress> is the IP address of the SNMP manager.

<userName> is the name of the user, which must have authorization for notify access:

- for SNMPv3 must match one of the <userName> defined with addUser
- for SNMPv1/v2 this is the community string.

<securityType> is the minimum security level that must be used to gain access to this access right. Possible values are:

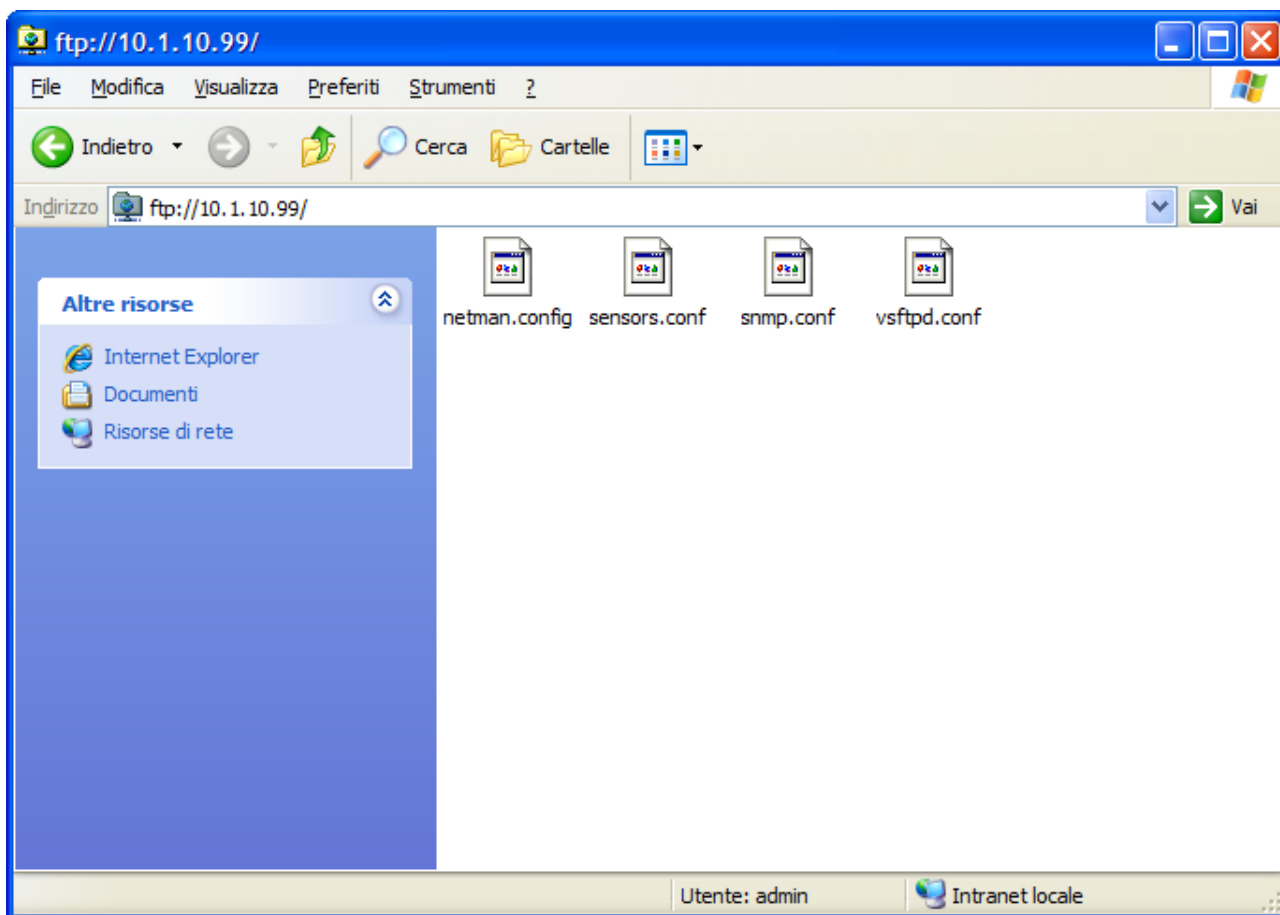
- *noauthnopriv* (no authentication and no privacy)
- *authnopriv* (authentication but no privacy)
- *authpriv* (authentication and privacy)

A sample snmp.conf is provided; the default users authorized are:

Name	Auth protocol	Priv protocol	Auth password	Priv password
unsecureUser	noauth	nopriv		
MD5	md5	nopriv	MD5UserAuthPassword	
SHA	sha	nopriv	SHAUserAuthPassword	
MD5DES	md5	des	MD5DESUserAuthPassword	MD5DESUserPrivPassword
SHADES	sha	des	SHADESUserAuthPassword	SHADESUserPrivPassword

Configuration of several devices

If several devices requiring similar configuration parameters are to be installed, configure the first card, connect via FTP with the admin user, download the configuration file, and upload them on all devices to be configured via FTP.



Example of FTP connection for multiple installations

FIRMWARE UPDATE

The *NetMan 202 plus* firmware can be updated via FTP.

Connect via FTP with the user "fwupgrade" (password "fwupgrade") and copy the updated firmware. Then restart the card, by pressing the reset button or via SSH enter into the menu with user "admin" and select "Save changes".

TECHNICAL DATA

SPECIFICATIONS FOR THE CABLING OF THE NETWORK CABLE

To connect the device to the Ethernet (10Base-T) or Fast Ethernet (100Base-T) network, a UTP (Unshielded Twisted Pair) or STP (Shielded Twisted Pair) cable with RJ45 connectors is required. The cable must conform to the standard IEEE 802.3u 100Base-T with 2 pairs of UTP cables of category 5 or higher. The cable between the adaptor and the hub must not be more than 100m and not less than 2.5m.

NETWORK CABLE CONNECTIONS	
Signal	Pin # to Pin #
TX+	1 ← → 1
TX-	2 ← → 2
RX+	3 ← → 3
RX-	6 ← → 6



Pins 1 and 2 must be connected to one twisted pair, pins 3 and 6 to another.

TECHNICAL SPECIFICATIONS

<i>NetMan 102 plus</i>			
POWER SUPPLY	Input voltage	[Vdc]	12
	Maximum inputcurrent	[mA]	200
ENVIRONMENTAL CONDITIONS	Operating temperature	[°C]	0 ÷ +40
	Storage temperature	[°C]	-5 ÷ +50
	Operating relative humidity	[%]	80 (max)
	Storage relative humidity	[%]	90 (max)

